



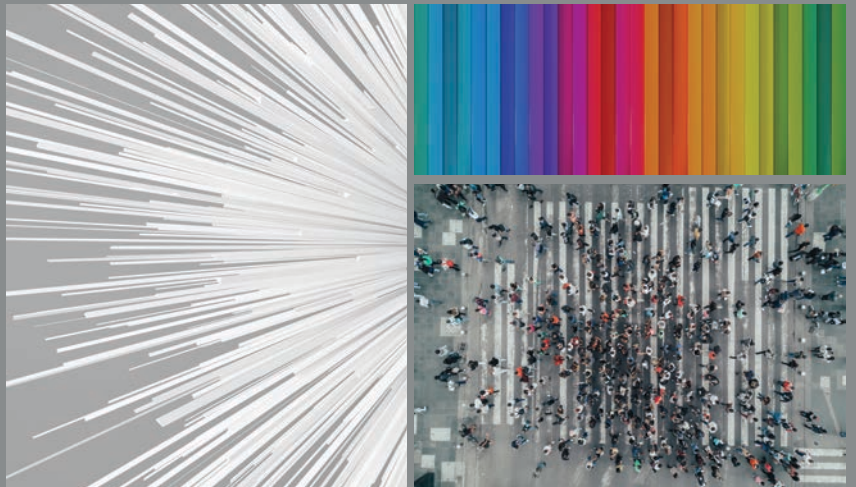
# Art Intervention

Draft Point Central Point Creative Spark





Art Intervention is an interaction with a previously existing artwork or space with the intent of changing the message to the audience. Central Point and Draft Point use random vertical lines in increasingly dense ratios to create movement across the floor, while Creative Spark “intervenes” with that movement, allowing a place for the eye to rest. The color palette is full of rich, vibrant color, grounded by sophisticated neutrals. We created this collection to give designers a tool to change the dynamics of a space in a meaningful, positive way.







Draft Point 959 Pewter, Central Point 939 Platinum, Creative Spark 989 Carbon (Brick Ashlar Installation)  
Cover: Draft Point 959 Pewter (Brick Ashlar Installation)





Central Point 569 Lapis (Brick Ashlar Installation)





**Draft Point 575 Midnight, Lineate 948 Figured (Brick Ashlar Installation)**  
Note: Transition strip to be used where carpet and hard surface meet.





# Technology & Features

## **HEATHERED HUES CARPET FIBER**

Art Intervention's aesthetic is created with Heathered Hues, Mohawk Group's new high performance color yarn system available in both Duracolor and Colorstrand technologies. This highly sustainable, solution dyed fiber creates high styling and vivid color for all market segments, projects and budgets. Heathered Hues fiber is textured and blended in a desirable palette of warm and cool neutrals with vibrant color accents. Heathered yarns provide visual texture and dimension when tufted, allowing for a variegated wool-like appearance for warmth and sophistication. Designed to do more with less, the yarn is dematerialized for a low environmental impact, and no water is used in production.

## **COLORSTRAND FIBER**

For over 15 years, Colorstrand fiber has continually exceeded the demanding expectations of our customers for their projects. With the design flexibility and color intensity of solution dyed fiber, Colorstrand delivers lasting beauty and value. And, Colorstrand has the added benefit of third party SCS Global Services certified 30% recycled content.

## **ECOFLEX™ MATRIX CARPET TILE BACKING**

Mohawk Group continues its dedication to sustainable solutions with EcoFlex™ Matrix, the next generation in carpet tile backing. Using advanced materials and patent pending engineering, EcoFlex Matrix lowers environmental impact without sacrificing performance. EcoFlex Matrix simplifies floor preparation and installation, greatly reduces sub-floor moisture concerns, and is easier to ship and handle.

For full details visit the technical resources section at [mohawkgroup.com](http://mohawkgroup.com)

# Specifications

**Draft Point**  
**Central Point**  
**Creative Spark**

## DESIGN

Size	24" x 24" (.6096m x .6096m)
Surface Appearance	Level Patterned Loop
Fiber Type	Colorstrand® SD Nylon
Dye Method	Solution Dyed
Installation Methods	Quarter Turn / Brick Ashlar
Colors Available	
Draft Point	10
Central Point	8
Creative Spark	2

## PERFORMANCE

Construction	Tufted
Gauge	1/10" (39.37 rows per 10cm)
Stain Release Technology	EcoSentry Plus Stain Protection
Soil Release Technology	EcoSentry Soil Protection
Backing Material	EcoFlex™ Matrix
Flammability	ASTM E 648 - Class 1 (Glue Down)
Smoke Density	ASTM E 662 - Less than 450
Static Propensity	AATCC - 134 Under 3.5 KV

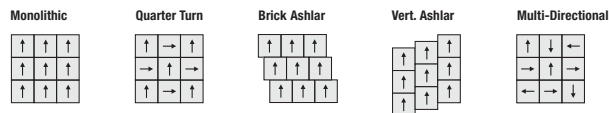
## SUSTAINABILITY

Certification	Declare Red List Free
Indoor Air Quality	Green Label Plus #1171
NSF 140	Gold

## SERVICE

Warranties	Lifetime Limited Carpet Tile Warranty, Lifetime Limited Colorfastness to Light, 10 Year Limited Colorfastness to Atmospheric Contaminants, 10 Year Stain Warranty, Lifetime Static
------------	--

Installation Instructions:



Mohawk Group warrants its adhesives for the life of the original installation only when a Mohawk Group style (product) is installed. Mohawk's floor preparation procedures must be followed to ensure that the substrate has been prepared properly. Failure to use Mohawk Group adhesives or to follow Mohawk's floor preparation procedures will void all lifetime adhesive warranties. Please contact your local Sales Representative for installation guidelines.

**These patterns contain inherent characteristics which may result in pattern run off and/or pattern appearance variations at the seams or tile edges (darker or lighter pattern lines). These characteristics are inherent in the patterns and are not manufacturing defects. Consideration to these characteristics should be given when selecting an installation method.**

Chair pads are recommended under office chairs with roller casters to preserve appearance retention, act as a deterrent toward delamination and to prevent premature or accelerated wear. Walk-off tiles from the Tuff Stuff II Collection are recommended at entryways to reduce soiling.

Mohawk Group is providing this architect folder for the purpose of promoting our commercial business. This folder and its samples shall remain the property of Mohawk Group. Color may vary from dye lot to dye lot. Substitution of material may be made due to improved technology, supply limitations or other factors. The performance of this product is not affected by such variations.

For current and complete specifications please visit [www.mohawkgroup.com](http://www.mohawkgroup.com)



877-3RE-CYCL



Produced with recycled materials

Mohawk Group

Mohawk Group  
160 South Industrial Blvd.  
Calhoun, GA. 30701  
1-800-554-6637  
mohawkgroup.com

QSCDC PHOTO BROCHR LT